

● REAL-TIME OEE SOFTWARE

See your factory's real OEE - live.

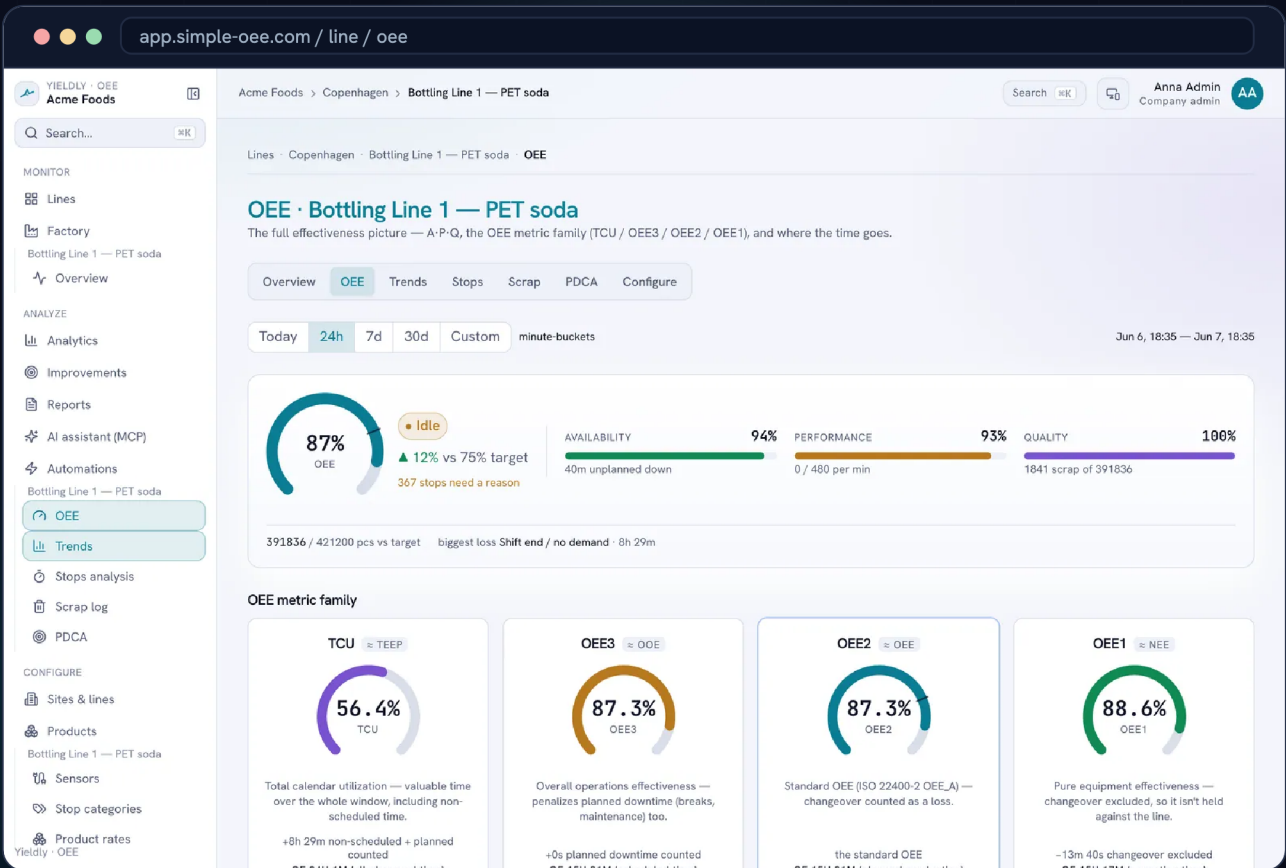
Yieldly turns what your machines actually make into a live, standards-based OEE number for every line - so you catch every stop the moment it happens, find the losses that cost the most, and act before the shift is over. From the operator's tablet to the plant manager's report, one platform.

Live OEE on every line

Automatic stop capture

One-tap reasons

ISO 22400-2



Real-time

OEE, stops & speed - always current

One tap

to log why a line stopped

Same day

from sensor to live data

THE OPPORTUNITY

A third of your capacity is invisible without measurement

When a line is measured honestly for the first time, the real number is rarely the one on the whiteboard. Short stops, slow cycles and unlogged minutes quietly add up across every shift - capacity you already paid for, sitting idle. Yieldly makes it visible, and visible losses are losses you can fix.

Most factories run a **hidden factory** they can't see.

Without continuous measurement, downtime is reconstructed from memory at the end of the shift - so the small, frequent stops that do the real damage never make it into the record. Yieldly measures every line continuously and automatically, putting an honest number on the floor in real time.

40-60

%
where most lines sit when first measured honestly

85

%
the world-class OEE benchmark to aim for

WHAT YOU GET



True OEE, live

One honest number per line - availability x performance x quality - to ISO 22400-2.



Every stop, captured

The line stopping is detected the moment it happens. Nothing slips through.



One tap to log a reason

Operators classify a stop from a phone or floor tablet in a single tap.



Find the costly losses

Downtime ranked by impact, so you always know what to tackle next.



Reports that write themselves

Shift, daily and weekly OEE reports generated and delivered on schedule.



One line to the whole plant

Roll performance up across cells, lines and sites - or drill to one machine.



Improvement you can prove

Run structured PDCA cycles against the live numbers, not a hunch.



Ask your factory anything

Connect Claude or ChatGPT to your live OEE and ask in plain language.

YOUR WHOLE PLANT, AT A GLANCE

app.simple-oee.com / lines

YIELDLY · OEE
Acme Foods

Acme Foods · all lines

Production lines
6 lines across 2 sites · refreshes every 30 s

Line Name	OEE Today	Units	Rate Now	Up Since
AARHUS Case Packer — aging	69%	40,126	0/min	18:37
AARHUS Labeller — pressure sensitive	74%	142,718	0/min	18:34
AARHUS Palletizer — case stacker	93%	26,821	0/min	18:28

556 unclassified stops — classify →

1443 unclassified stops — classify →

104 unclassified stops — classify →

HOW IT WORKS ON THE FLOOR

Capture every stop. Find what it costs. Act on it.

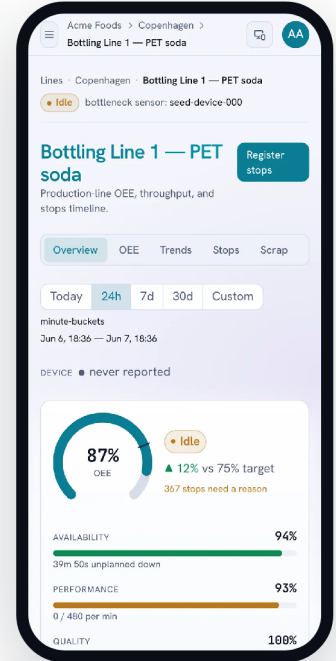
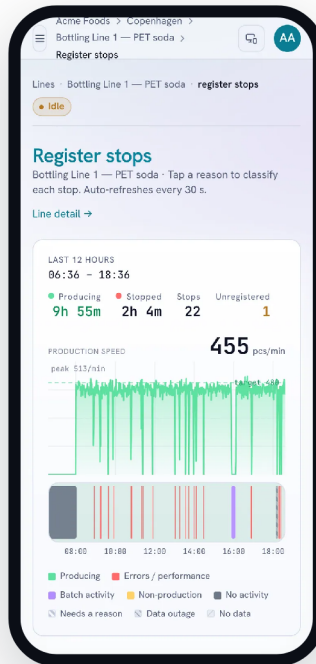


Automatic stop capture, one tap to log the reason

The instant a line stops, Yieldly catches it - no clipboards, no end-of-shift memory. The operator classifies it from a phone or wall-mounted tablet in a single tap, so the reason lands in the data where everyone can see it.

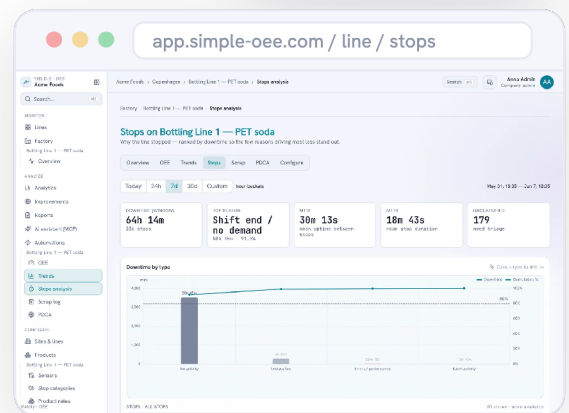
- ⚡ Every stop detected the moment it happens
- 📱 Built for the floor - on any phone or tablet
- 📊 Reasons feed loss analysis instantly

Pictured: one-tap stop logging, live on a phone.

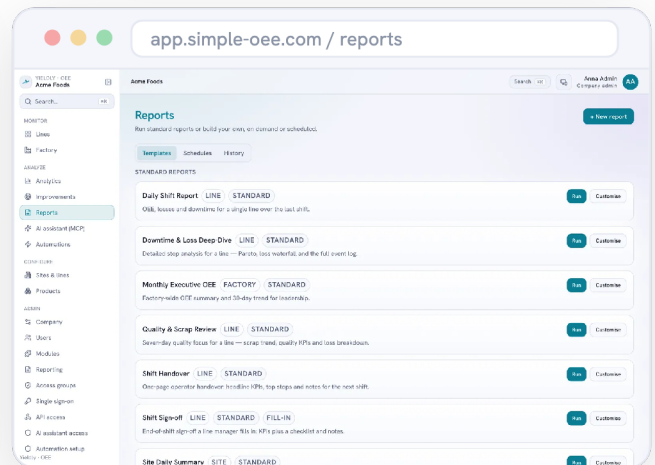
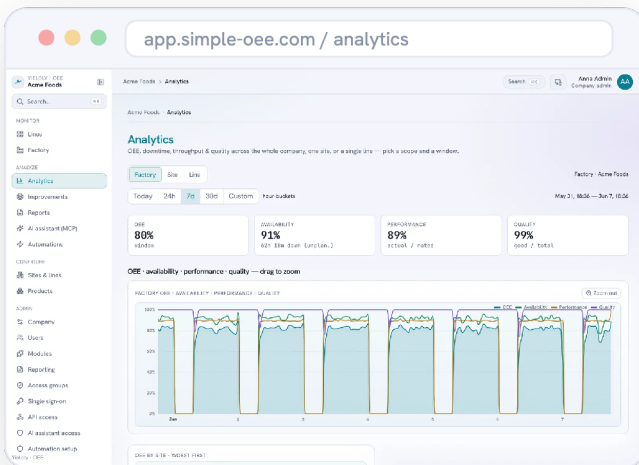


Downtime ranked by what it costs

Losses sorted by their real impact, so the handful of reasons behind most of your downtime jump straight out. You always know what to fix next - and the cumulative curve shows exactly where the vital few end.



ANALYTICS ACROSS LINES AND SHIFTS, REPORTS THAT WRITE THEMSELVES



Compare lines, shifts and sites over any window, then let scheduled shift, daily and weekly reports land in inboxes automatically - reclaiming the hours that used to go into spreadsheets.

THE STANDOUT

Ask your factory anything, in plain language

AI ASSISTANT

Connect Claude or ChatGPT to your live OEE.

Your assistant queries real production data securely, so anyone can ask the questions they would have waited a week for a report to answer - and get them in seconds, grounded in the live numbers. No dashboards to build, no SQL to write.

Which line lost the most last week?

What's our top stop reason today?

Compare OEE across both sites

You Which line lost the most to downtime this week, and why?

Bottling Line 2 lost the most - 14h 22m, driven mainly by changeover and minor stops. Its OEE was 39% against a 75% target. Want the stop breakdown?

CONNECT EVERYTHING

Fits the systems you already run



Open API

A documented REST API with scoped access keys - pull OEE, stops and counts into your MES, ERP or data warehouse.



Real-time webhooks

Subscribe any endpoint to events - stops, outages, threshold breaches - and get them pushed the moment they occur.



No-code automation

Wire production events into the tools your team already runs - Zapier, Make and n8n - with no glue code.

Zapier

Make

n8n

ENTERPRISE-READY

Secure by design, controlled by you



Single sign-on

Let your team sign in with your company identity provider (SAML or OIDC).



Directory sync (SCIM)

Provision and deactivate users and groups automatically from your identity provider.



Multi-factor authentication

Require a second factor at sign-in across your whole company.



Role-based access

Roles plus per-team access groups - people only ever see the lines and sites they are granted.

Your data is yours. It is encrypted in transit, runs in a secure cloud on AWS, and every view is enforced server-side - people only ever see the lines and sites they have been granted.

Numbers that hold up. OEE is calculated to the normative **ISO 22400-2** definition, and your equipment is modelled on the **ISA-95** hierarchy - so the metrics are comparable across lines and sites, and map cleanly onto the MES and ERP systems you already run.

ISO 22400-2

ISA-95

Open API

See it on your own line. Book a demo.

We'll put a real number on the downtime you can't see today - and show your line going live the same day, no integration project.

Book a demo